

## About Parsica

Sika Pars Saze Alborz Company (Private Shareholding) with the support of 10 years of research work and taking advantage of the latest technologies and standards in the world and with an experienced technical staff, produces more than 100 types of chemical products related to the construction industry, including the new generation of concrete additives Super plasticizers, repair mortars, expandable plasters, concrete sealants, mortars, tile and antique stones adhesive, etc. are offered in domestic and foreign markets under the PARSIKA brand



Manufacturer of building  
chemical products

Qazvin, Norouzian Street, Intersection of Muallem Boulevard, Corner of  
Golbarg Street, No. 161, 3rd Floor

028-33662033 028-33662066 028-33662099

[www.parsica.co](http://www.parsica.co)



Manufacturer of chemical products  
for construction



## Contents

|                                   |    |                                     |    |
|-----------------------------------|----|-------------------------------------|----|
| One part Mortar sealant .....     | 31 | Powdered Ceramic Tile Adhesive..... | 1  |
| Microsilica gel and powder.....   | 33 | Porcelain powder adhesive.....      | 3  |
| Concrete and mortar adhesive..... | 35 | Powdered brick adhesive.....        | 5  |
| Cement mortar.....                | 37 | Ceramic tile adhesive.....          | 7  |
| Epoxy mortar.....                 | 39 | Block clc adhesive.....             | 9  |
| Restorative mortar.....           | 41 | Glass Tile Adhesive.....            | 11 |
| Hard mortar.....                  | 43 | Rebar implant adhesive.....         | 13 |
| Granite Floor.....                | 45 | two components bonding powder.....  | 15 |
| Curing.....                       | 47 | Nano hydrophobic facade.....        | 17 |
| Antifreeze concrete.....          | 49 | Stone & brick washing liquid.....   | 19 |
| Bituminous coating.....           | 51 | Gypsum primer for surfaces.....     | 21 |
| Form oil.....                     | 53 | Lubricant Concrete.....             | 23 |
| Quick concrete.....               | 55 | Super Concrete Lubricant.....       | 25 |
|                                   |    | Concrete and mortar sealant.....    | 27 |
|                                   |    | Flexible sealing mortar.....        | 29 |

PARSICA ●●

## About Parsica

Sika Pars Saze Alborz Company (Private Shareholding) with the support of 10 years of research work and taking advantage of the latest technologies and standards in the world and with an experienced technical staff, produces more than 100 types of chemical products related to the construction industry, including the new generation of concrete additives Super plasticizers, repair mortars, expandable plasters, concrete sealants, mortars, tile and antique stones adhesive, etc. are offered in domestic and foreign markets under the PARSICA brand

**Qazvin, Norouzian Street, Intersection of Muallem Boulevard, Corner of  
Golbarg Street, No. 161, 3rd Floor**

**028-33662033 028-33662066 028-33662099**

**[www.parsica.co](http://www.parsica.co)**



**PARSICA**

Manufacturer of building  
chemical products

## Powdered Ceramic Tile Adhesive

Ceramic tile adhesive contains a polymer with high sealing and adhesive properties. It is a mixture of cementitious materials with polymeric additives reinforced with cellulose fibres, to which only by adding water, an excellent and water-resistant adhesive is created for tiling

### Uses

- Wall and floor tiles
- Installing marble and mosaic tiles
- Tiling on old tiles
- Installation of tiles and sound-insulating parts

### Consumption amount

Each kilogram of adhesive powder tile covers a surface equivalent to 0.250 to 0.375 square meters with a thickness of 2 to 3 mm.

Add 22% to 25% by weight of tile adhesive to the water

Average 6.4 liters of water per a bag of 20 kg



### Benefits

Non- toxic – easy to use and high efficiency – excellent adhesion to the surfaces of the old tiles – lightweight and fast implementation – suitable for use inside and outside of the building and direct application on the lining of cement concrete and mortar and even lime -It is waterproof and can be used even in swimming pools.



The shelf life of this product after mixing with water is 3 hours.

### Porcelain powder adhesive

Porcelain powder tile adhesive is a beige mono-component product based on modified cement and polymers that can be used to install a variety of granite, porcelain, stone and pottery on under floor heating system, on walls and floors, and in indoor and outdoor spaces of the building.



### Uses

Installing granite, porcelain, stone, pottery and brick even in humid and crowded environments

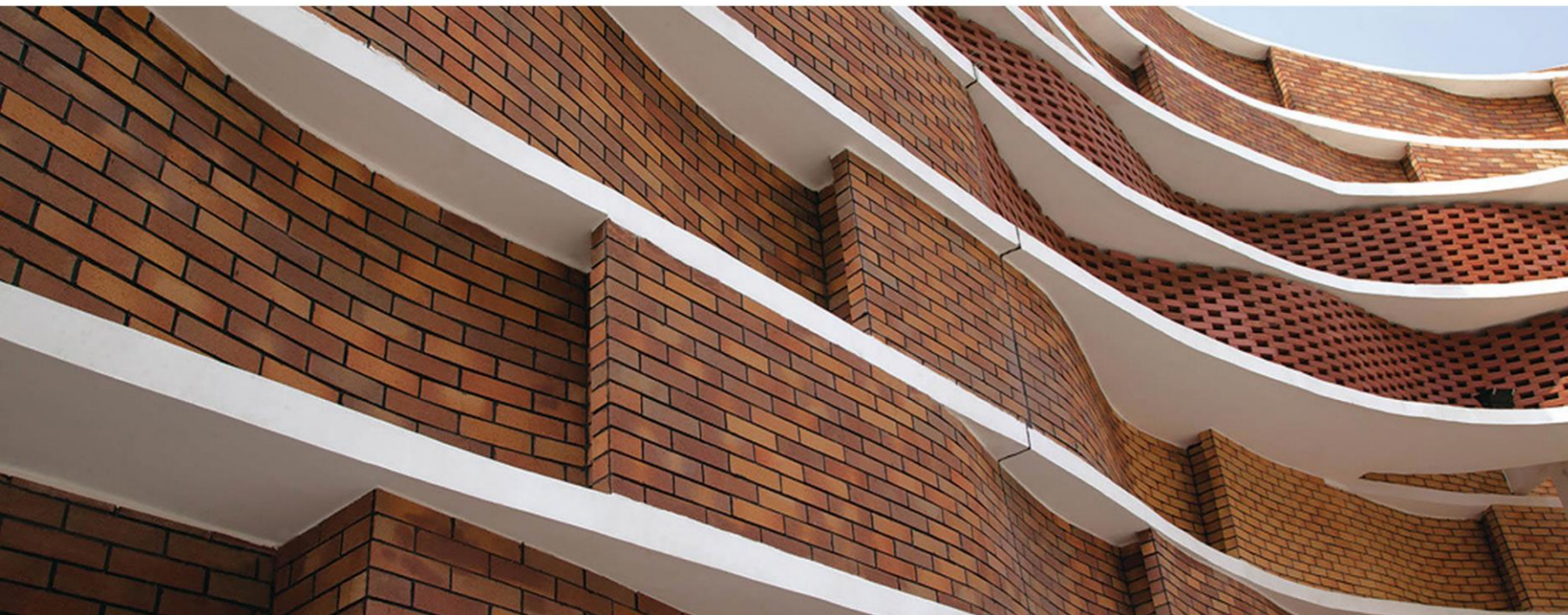
### Benefits

- Ready-to-use product by adding water
- Extremely high adhesion to all types of building materials
- High resistance to water and wet environment
- Excellent flexibility against building movements
- Vertical and easy installation-- Excellent adhesion
- High resistance to water and submersion in water
- Free from excess
- Retains Adhesion and adhesive properties in underfloor heating systems.

Consumption: Porcelain adhesive: 3 to 4 kg per square meter

## Powdered two-component brick adhesive

Two-component brick adhesive is a product that contains cementitious materials with polymeric additives and is reinforced with cellulose fibres. An adhesive with high adhesion and water resistance is used to bond the facade tiles



### Consumption

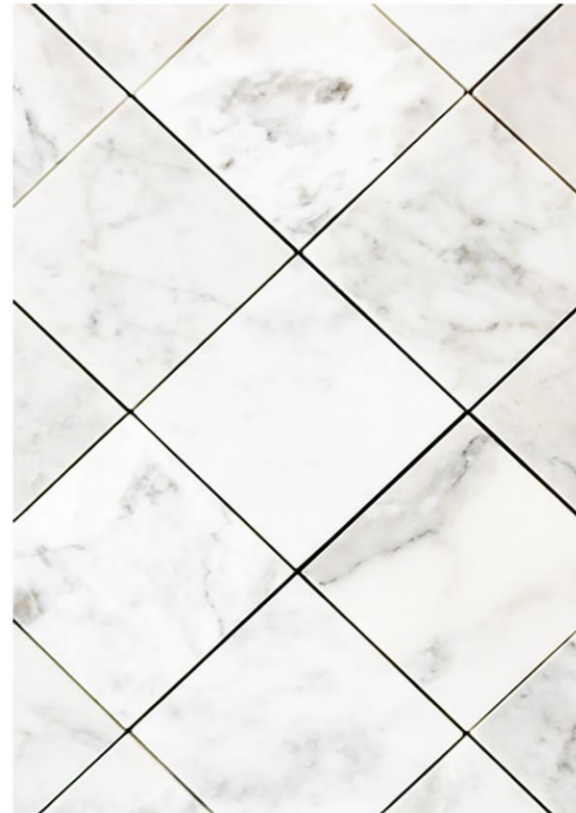
Each kilogram of tile adhesive covers a surface equal to 0.250 to 0.375 square meters with a thickness of 2 to 3 mm.

Mixing ratio: 8 kg of liquid and 20 kg of powder

### Uses

Installation of facade tiles, installation of marble and mosaic tiles, on old tiles, installation of soundproof tiles and pieces





## Ceramic tile adhesive

This ready-to-use adhesive can stick tiles on a variety of cement, gypsum, and tile on tiles, complete floor-to-ceiling tile work, and even install a mirror on the surface itself

## Uses

- Installing all types of tiles on grout, stone and other surfaces and sticking tiles to tiles (old surfaces)  
Easy to install tiles without having to remove old tiles

## Consumption

Depending on the substrate porosity and its unevenness the amount of adhesive consumption is 3 to 4 kg per , square meter (the adhesive is ready to use and does not need to be mixed with any materials)

SP2000



SP3000



## Block clc adhesive

This adhesive is based on cement that contains special chemicals to increase adhesion. The use of this adhesive is suitable for the installation of light and precast concrete parts (cement blocks) that have the ability to absorb a lot of water.



### Benefits

- No waste and excess materials
- Non-combustible
- High adhesion
- Ready to use just by adding water
- Reduce building overload



### Uses

- Plaster and plaster replacement on light block parts
- Filling joints, repairing damage of light block parts and joint filling
- Damage repair of light block parts
- Installation of different types of Hyplex block bricks - Silex - Light concrete, gas concrete and foam concrete

### Consumption

Thickness required for sticking: 2 to 3 mm, the ready-made adhesive can be used for up to 2 hours, the waste of this adhesive is zero.



## Glass Tile Adhesive

Ready-made mortar for gluing lightweight blocks based on polymer modified cement and reinforced fibers. It is applied with very little thickness (between 3 to 5 mm).

Economical mortar used in the implementation of light blocks as well as their repair.



### Benefits

- Excellent adhesion to lightweight blocks
- Excellent freeze resistance - High mechanical resistance - Non-toxic and corrosive sulfate resistance
- Mix with water only
- adjustable concentration



How to use: the minimum and maximum application of each layer is 1 and 5 mm

Consumption: about 1.5 kg of powder is required per liter of mortar

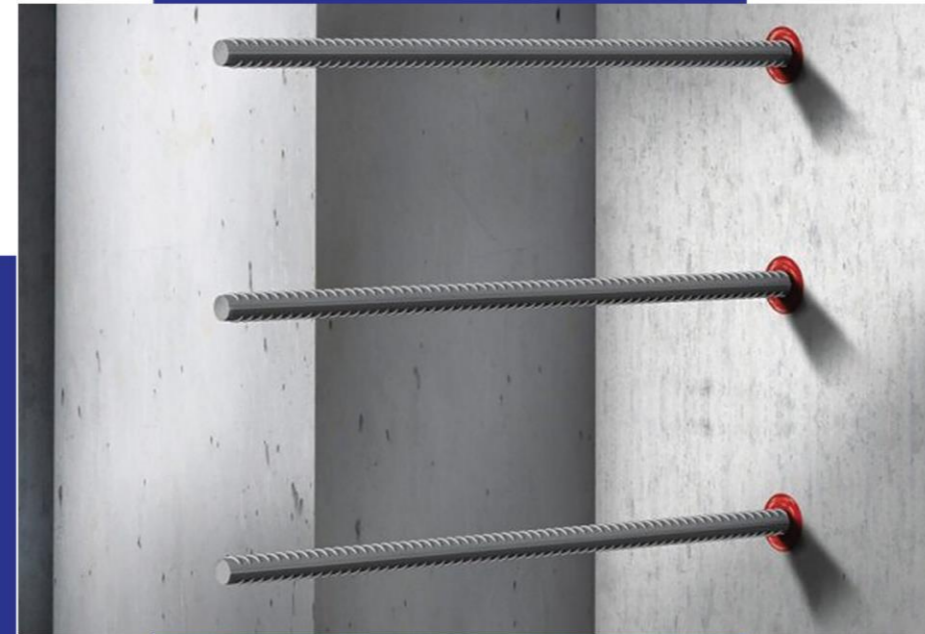






Rebar can be embedded in vertical and horizontal surfaces. Rebar Implantation Adhesive is a three component product based on epoxy acrylate and this product creates a strong bond between the old concrete texture and the new texture.

Adhesive for reinforcing bars and bonding mortar should be injected at two-thirds of the depth of the hole.



### Rebar implant adhesive

After combining steel reinforcement adhesive components according to the instructions, a homogeneous mortar is created that, after application, reaches initial gluing much faster than ordinary mortars. Based on the epoxy resin used in the production of this adhesive, good mechanical resistance is obtained.



#### Benefits

- Quick and easy implementation
- Very good stickiness
- Does not require the use of solvents
- Not affected by climatic and environmental factors

#### Uses

- Seal the gaps in the ceiling, walls and floor
- Installation of metal panels on vertical surfaces
- Inserting screws and iron bars on vertical and horizontal surfaces

## Bonding powder ceramic & break

Bonding powder is made on the basis of polymer modified cement, is waterproof and suitable for use in all weather conditions and comes in different colors

### Benefits

- Water resistant
- resistant to detergents
- has excellent adhesion to the sides of the tiles

### Uses

The powder can be used to fill the seam between ceramic, mosaic, tile, stone and floor tiles

Mixing ratio: water in relation to powder: 1 over 3



## two components bonding powder

Tile Groot is a two-component bonding powder with a polymer modified cement base with a special water-repellent fluid suitable for use in all areas

### Consumption amount

add enough liquid to the powder- The resulting mortar can be used to fill joints



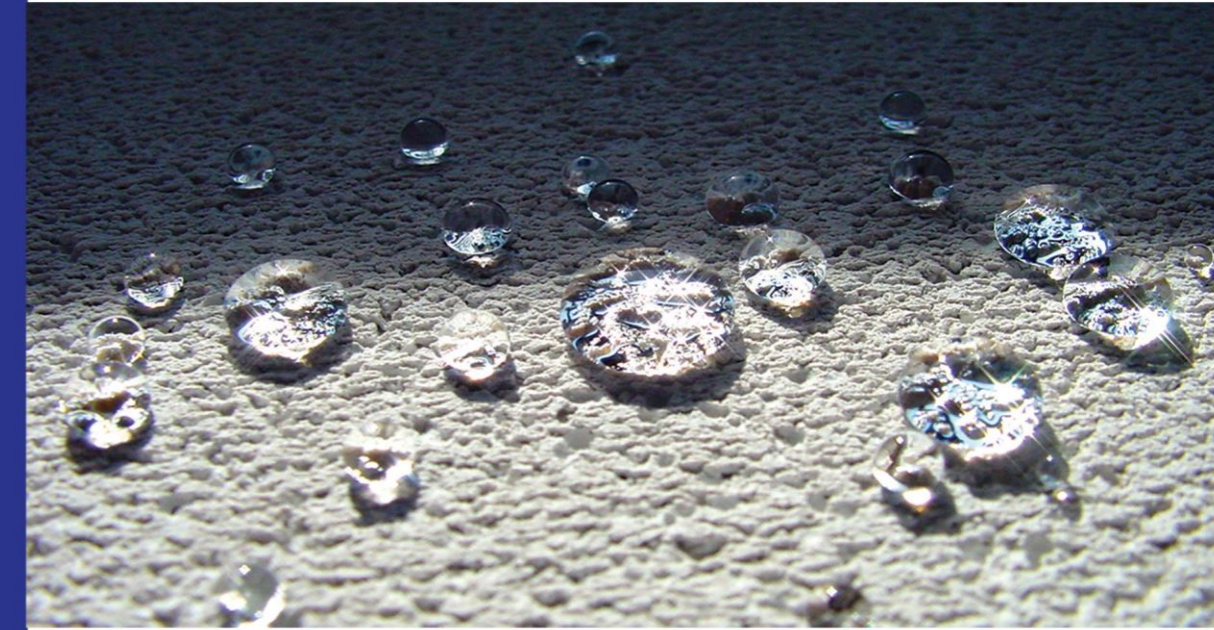
## Nano hydrophobic facade

The Nano Waterproof Building Facade Cover is completely colorless and does not change the appearance. It is easy to implement and can be implemented in a very short time. The facade waterproof coating also prevents flacking from appearing on the outside of the building



### Consumption amount

Each liter of the waterproof Nano-coating is used to coat the surface of about 4 to 5 square meters of the building facade



### Benefits

- Preventing water penetration into the depth of the material by creating a hydrophobic property
- Sun Resistant
- Dust does not stick to the surface
- Preventing the deep absorption of pollutants on the surface.

Stone and building facade washing liquid removes blocks from the appearance of the building. This product is designed in a way that does not harm the color and texture of the facade and can be used with water spray or brush, and it gives the best view of the building facade after use.

### Benefits

Facade washing liquid for cleaning and washing stone facades-- Brick facades and other different types of facades-- facade washing liquid is used to remove soot from the surface well and water consumption is reduced due to the quality of the product



Consumption amount: one kilogram washes 4 meters of the facade



See the video of the implementation of this product by scanning the code opposite



### Stone & brick washing liquid



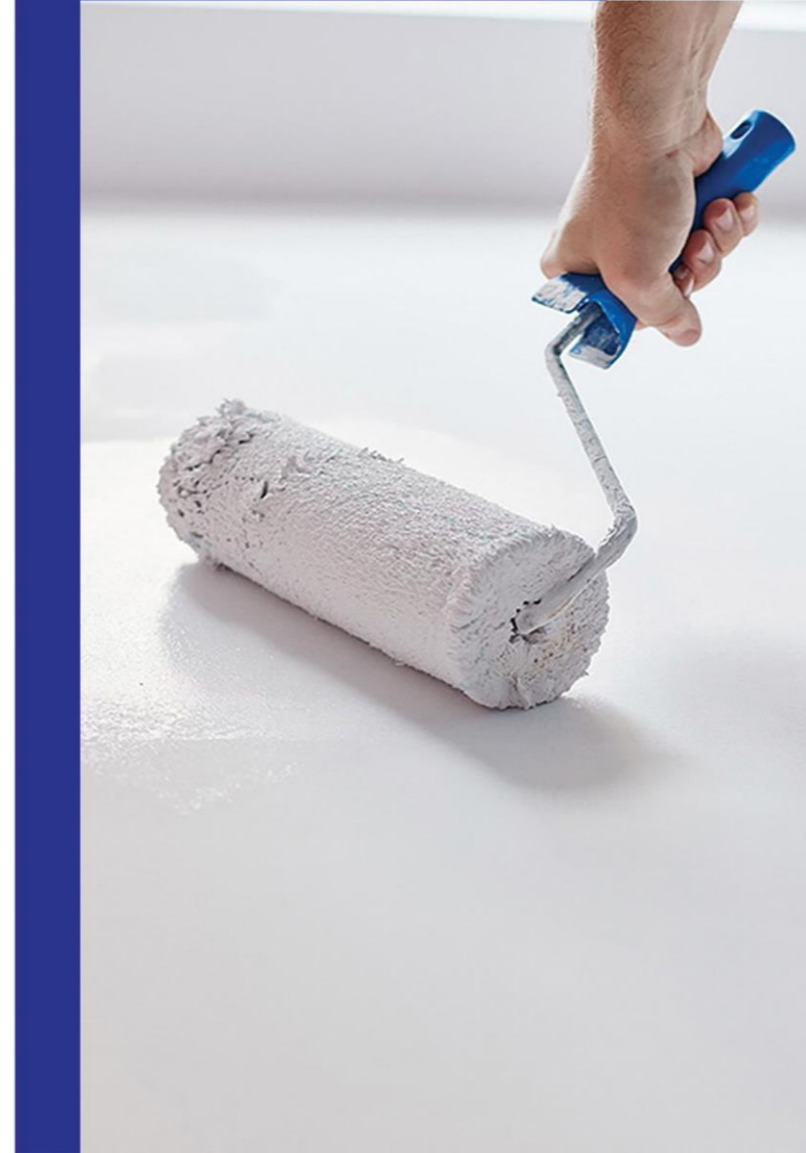


## Gypsum primer for surfaces

Gypsum primer is used to increase the strength and adhesion of building materials such as tile adhesive, wallpaper, and similar objects to gypsum surfaces

### Uses

Gypsum base is suitable for the substructure to install different types of coatings for gypsum surfaces as it increases the adhesion and speed required for the installation of new layers such as wallpaper adhesive etc. on gypsum



**Consumption amount** varies depending on the sub-levels and it is recommended to quantify the application of gypsum primer by sub-level and through workshop tests but in normal conditions of spraying on surfaces of about 5 to 7 square meters can be coated with one liter of gypsum primer.





## Lubricant Concrete



Naphthalene sulfate-based thinners are another type of water-reducing and fluid-enhancing additive in concrete that, in addition to ease of application, increases the initial and final strength of concrete, increases the adhesion of the materials used, and reduces shrinkage of concrete And it conforms to the standards ASTM C 494-81 Type A



## Uses

In cases where high initial strength is required after 8 to 24 hours in ready-mix concrete plants it can be used at temperatures ranging from 5 to 20°C. The use of this material can brush and polish the concrete surface at low temperatures provided without reducing the tenacity and adhesion of the concrete, this product is very suitable for use in concrete slabs and the roofing system is very suitable especially in the winter season when the concrete is exposed to cold weather

SIKA PLAST T60

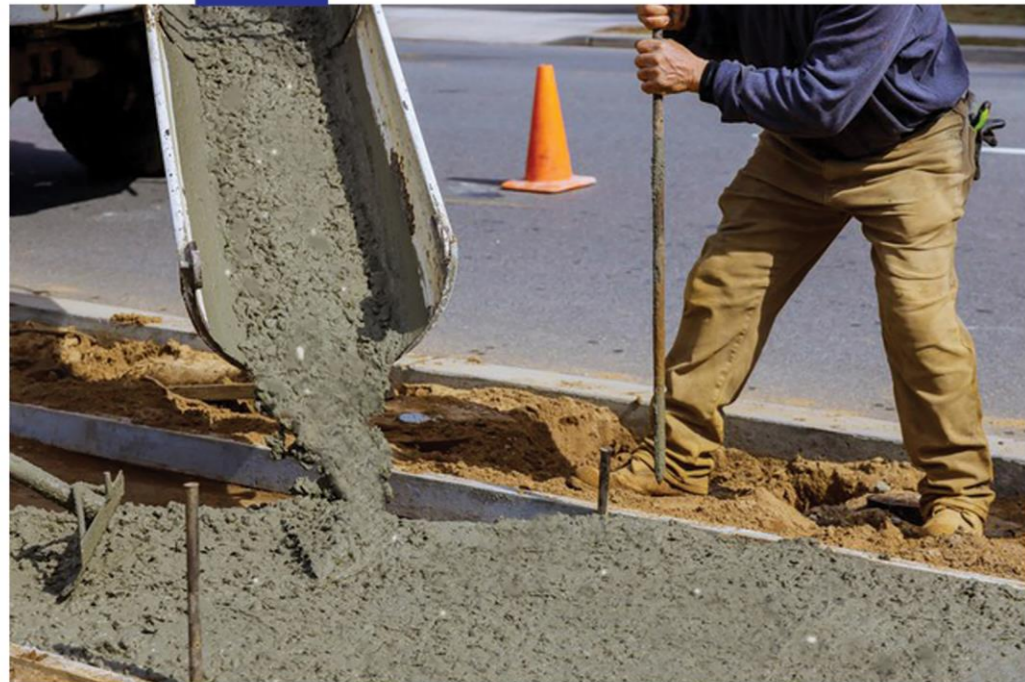
SIKA PLAST T63

SIKA PLASTZ230

SIKA PLASTW/3

## Consumption amount

The recommended Consumption amount for achieving high initial strength paste-concrete is between 0.7 to 1.5% of the weight of the cement used.



### Uses

Suitable for the production of concrete such as ready-made concrete in the workshop to achieve high quality. Suitable for use in summer for long carrying distances as well as pouring concrete that encounters long delays. The mentioned additive offers the possibility of significantly reducing water which leads to an increase in the adhesion and cohesion between the aggregates as well as an increase in the self-pressure of concrete (self-vibrating concrete)

### Consumption amount

for concrete production the recommended Consumption amount is 0.4% to 0.9% of the weight of the cement consumed

Mixing method: Concrete should be added directly to the mixing water before it is added to the materials or at the same time with the mixing water. (To better control the water reducing property of this additive, first add the minimum mixing water and stir the concrete mixture in the mixer for 60 seconds and then add the rest of

### Super Concrete Lubricant

Naphthalene sulfate-based thinners are another type of water-reducing and fluid-enhancing additive in concrete that, in addition to ease of application, increases the initial and final strength of concrete, increases the adhesion of the materials used, and reduces shrinkage of concrete. And it conforms to the standards ASTM C 494-81 Type A



## Concrete and mortar sealant

### Plasto Proof

It is a liquid additive used as an effective lubricant and concrete sealant and is also compatible with ASTM C 494-81 Type A.

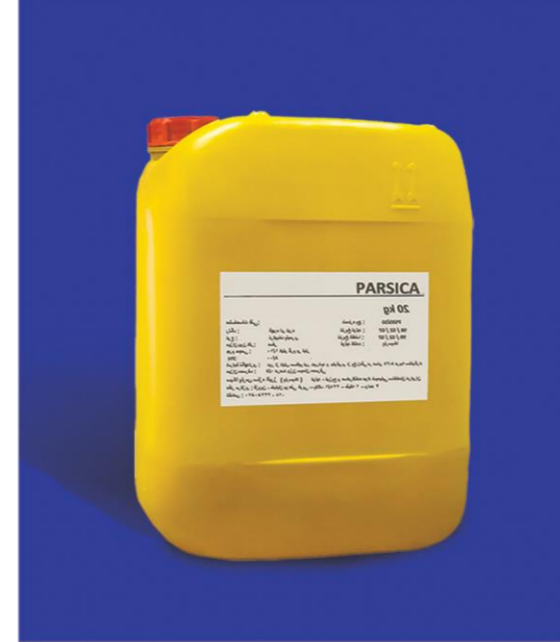
#### Benefits

Reducing shrinkage increases concrete strength in freezing cycles without chloride and does not damage reinforcement

Good seal

Increases the strength and durability of concrete

Improves concrete performance without the need for additional water



#### Mixing method

This material can be added directly to the mixing water before being added to the material. Plastoproof is compatible with a variety of Portland cements including RC sulfate cements and if it is consumed in excess, it will increase the preparation time

0.5% of the weight of the cement consumed

#### Uses

- Water tanks and dams
- Canal sewage construction
- Aquifers
- Wherever concrete sealing is required







### Flexible sealing mortar

### Sika Flexicem 2k

It is a flexible, fiber-reinforced, two-component cement membrane used to seal concrete surfaces and protect concrete from chemical corrosion caused by salts, sulfates, chlorides and carbon dioxide.

### Consumption amount

one kilogram is required per square meter with a thickness of one millimeter

### Uses

Sealing concrete ponds and drinking water tanks, capping roofs, balconies, terraces, fountains, swimming pools, bathrooms and latrines before installing ceramic or stone -- Protecting concrete columns and bridges on roads and railways from carbon dioxide ingress --Protection of structures where the thickness of the concrete coating is less than usual -- Protection Concrete surfaces in contact with sea water, salts (such as sodium chloride, calcium chloride) and sulfates -- sealing walls and precast concrete components buried in the soil as a flexible leveling layer for thin wall concrete structures including structures that deform under stress such as precast panels and other structures

### Benefits

Ability to cover cracks and can be applied with fiber-reinforced adhesion to many surfaces such as concrete, cement mortar, stone, ceramics and bricks ability to withstand vibrations and pressure

### Mixing method

Pour the liquid component into a clean bowl of the appropriate size and while stirring with an electric mixer low speed (300 to 500 rpm) gradually add the powder component and keep stirring until you get a homogeneous mixture



## One part Mortar sealant

### Water Proof

Top Seal Parsika sealant mortar protects surfaces from contact and penetration of atmospheric and environmental factors such as water, moisture, sunlight, oil and other chemicals by forming a surface coating and increasing the longevity and appearance of the structure



### Uses

Seal the concrete basins and drinking water tanks. Close roofs, balcony, water fountains, swimming pools and sanitary facilities before installing ceramic or stone and other structures

After making any mortar or adhesive for concrete, you must keep the surface wet for more than a day.



### Mixing method

Easy to use with metal trowel, scraper, roller, brush and sprayerThe ability to cover cracks and can be applied in a fiber-reinforced formSuitable adhesion for many surfaces such as concrete, cement mortar, stone, ceramics and bricks  
Ability to withstand vibrations and pressure

1 kilogram is required per square meter with a thickness of one millimeter

## Microsilica gel and powder

It is a composite material based on micro silica, lubricants and a new generation of concrete additives, waterproofing materials and water repellent materials which meets the standards of ASTM C494-86 Type G and BS 5075: Part 3



### Uses

This material has the properties of super lubricating and micro silica in concrete  
Eliminates concrete permeability and increases wear resistance  
Reduces cement consumption and increases concrete slippage  
Ease of transportation, maintenance, use and transportation of concrete in tall structures  
Reduces the cost of making concrete by 30%

### Benefits

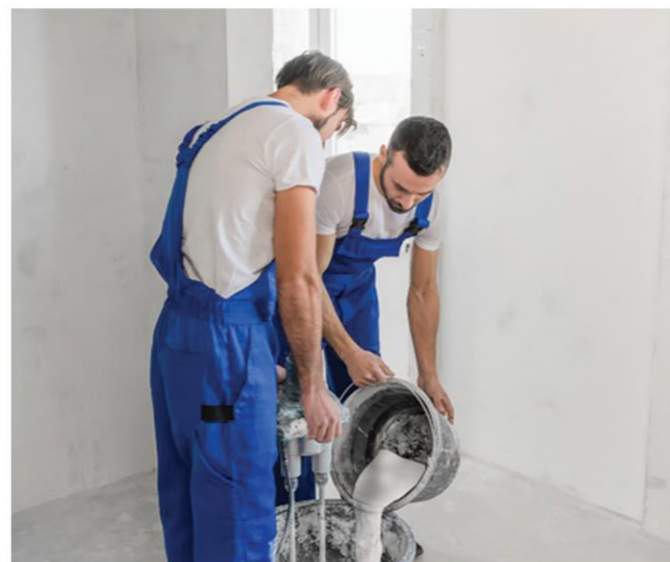
- Reduced shipping costs compared to liquid micro silica gel
- Less storage space and easier storage of bags compared to buckets
- 50% consumption reduction in mixing plan
- Easier mixing plan possible for technical managers

Under normal conditions, the required amount will be 5 to 8 percent of the

The gel can be added to concrete after complete mixing or dissolved in water and then added to the dry concrete components



## Concrete and mortar adhesive (sealant and hardener)



### Uses

- Corrosion Resistant Layers
- Low thickness staining mortar
- Adhesive mortar between new and old concrete
- Production of various repair mortars for concrete
- Tile grout, grout construction, chrome flooring

It is a polymer solution added to mortar to improve its adhesion and water resistance and is a high quality solution that significantly modifies and enhances the properties of cement mortar

### Benefits

Excellent adhesion - Non-corrosive and ready to use - Good water resistance - Reduced shrinkage and higher flexibility

Ease of mixing with mixed water - marked improvement in corrosion and chemical resistance and no hydrolysis even in highly alkaline environments

### Mixing ratio

Depending on the intended application it is added in a ratio of 1 in 1 to 1 in 3 to the mixing water

### Consumption

Each kg of concrete adhesive is combined with 2 to 3 kg of water and added to the dry mortar



LA12



## Cement mortar

Cement mortar (cement-based mortar) is a cementitious mortar of very high strength, controlled expansion without shrinkage, used for grouting under column plates, filling cavities and empty spaces under base slabs, implementing and stabilizing heavy machinery foundations. Other parts and uses are used for mortar



It is resistant to UV, does not change color, does not turn yellow and flaky

## Uses

Filling space under columns and base plates (Mortar under column plate - Filling deep gaps and cracks in floor, walls and space around reinforcement - Implementation and installation of steel plate infrastructure and foundations for heavy machinery)



## Benefits

- Improves and increases water and moisture resistance
- Easy to apply and quick drying. Creates a durable, high gloss finish on greasy concrete
- no polishing and other resins needed

## Consumption

12.9 liters of water is required per 25 kg bag of mortar

## Epoxy mortar

This product is a three-component, solvent-free, self-leveling epoxy mortar.



## Uses

Epoxy mortar has self-leveling and smooth properties that can be used on concrete, stone, steel, aluminum, wood, polyester and epoxy

Structural implants - Fixing bars and bearings - Brackets and coils of rebar

Primary rebar (root rebar) - little mortar casting: iron bars

Machinery Foundation Foundations - Fences & Small Columns

Tunnels, bridges and stair beams - base plates

## Mixing method

First, pour the component A in a bowl and add the component B. Stir with a low-speed mixer (maximum 300 rpm) until a homogeneous mixture is obtained with the correct concentration and flow, then pour the resulting mixture into a suitable container and add the ingredient C (sand) to the mixture with stirring (three minutes) and continue this process until a homogeneous mixture is obtained

The Consumption amount: the required average of 0.2 kg of powder per liter of mortar.



## Restorative mortar

It is a cement-based product with polymer additives and reinforced with cellulosic fibers of high adhesion and resistance used to repair concrete buildings

**Benefits** Non-toxic - High adhesion - Ease of use and high efficiency Create a waterproof and insulating bond - can be used in aquariums-Low consumption, light structure and speed of implementation direct application to cement, concrete and even lime mortar

### Consumption amount

Each kilogram of mortar covers a surface equivalent to 0.250 to 0.375 square meters with a thickness of 2 to 3 mm

## Uses

Concrete repair in case of changing shape or cracking and breaking with the approval of the supervising engineer

Mixing ratio: 8 kg of water vs. 20 kg of powder

 **PARSICA**



## Hard mortar

Floor coverings that are very resistant to abrasion and like colored concrete they must be painted over fresh concrete and if you want to do this in a place with old concrete, first pour 8 to 10 cm of fresh concrete and then apply hard mortar, and know that if 12 hours after the concrete has been set is passed, it will not be possible to put hard mortar on it.

### Features and details

- Hard mortar is available in colors (blue, green, yellow, red, brown, gray)
- Hard mortar has a high resistance to pollutants such as oil and gasoline
- Hard mortar without mineral additives (non-oxidizing in moisture) has high anti-corrosion strength and high compressive strength
- The solid spray mortar can be used as a solid spray
- Hard mortar has very high compressive and bending strength
- Hard mortar has very high resistance to melting and frost cycles
- Hard mortar is a non-slip floor

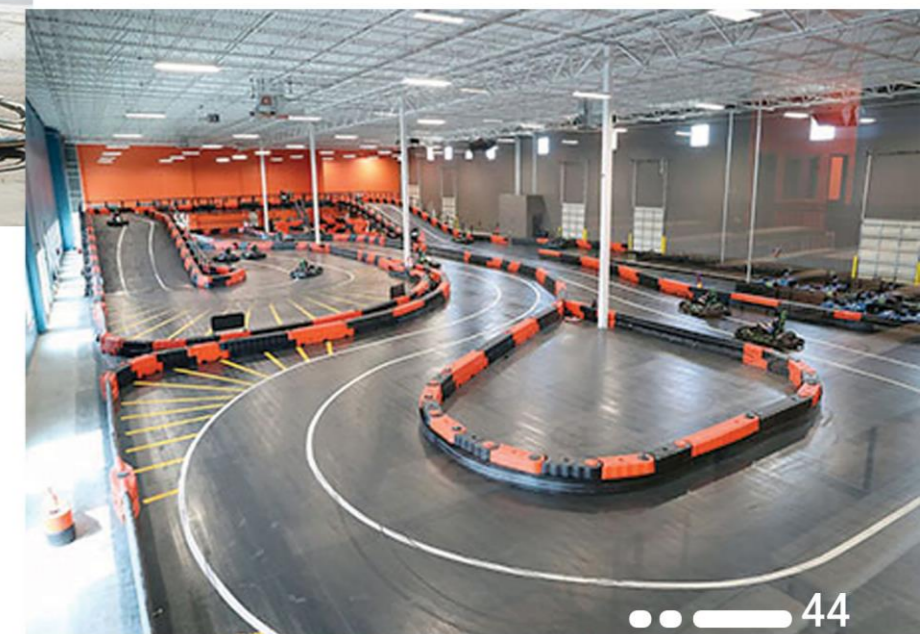


### Consumption amount

under normal conditions 4.5 to 6 kg per square meter and to achieve a surface reinforced coating with a thickness of 2 to 3 mm

### Uses

- Patio Flooring - Flooring for Large Fridges
- Slaughterhouse floors - petrochemical industries floors
- Pharmaceutical & Food Flooring - Warehouse Flooring
- Hospital and laboratory floors
- Industrial Workshop Flooring - Military Flooring
- Parking floors





## Granite Floor

This product is a granite floor covering, which is resistant to abrasion and impact and is used for all floor surfaces including: repair shops, factory warehouses, parking lots and garages.



## Benefits

- Improved and increased water and moisture resistance
- Easy to apply and quick drying
- Creates a highly durable, glossy layer on greasy concrete
- No need for polishing surfaces and other resins



It is UV resistant - does not change color - does not turn yellow and does not flake off

## Curing

Concrete curing liquid used to prevent concrete water evaporation

### Benefits

- Ensure optimum strength
- Reduce shrinkage and risk of concrete cracking
- Save maintenance costs
- Protect concrete
- Increase concrete's frost resistance
- Reduce surface drying and scaling of concrete



## Uses

Suitable for surfaces of rolled concrete structures after concrete pouring - This material is sprayed on freshly poured concrete to prevent premature evaporation of water by forming a thin film on the surface of the concrete, without changing the setting of the concrete, this material allows concrete to work well and reach the desired quality. Curing is especially used for pouring concrete over a wide area



### Consumption

The amount of coverage varies according to the amount of wind, humidity and ambient temperature and as a general guide its consumption is about 0.18 kg per square meter





## Antifreeze concrete

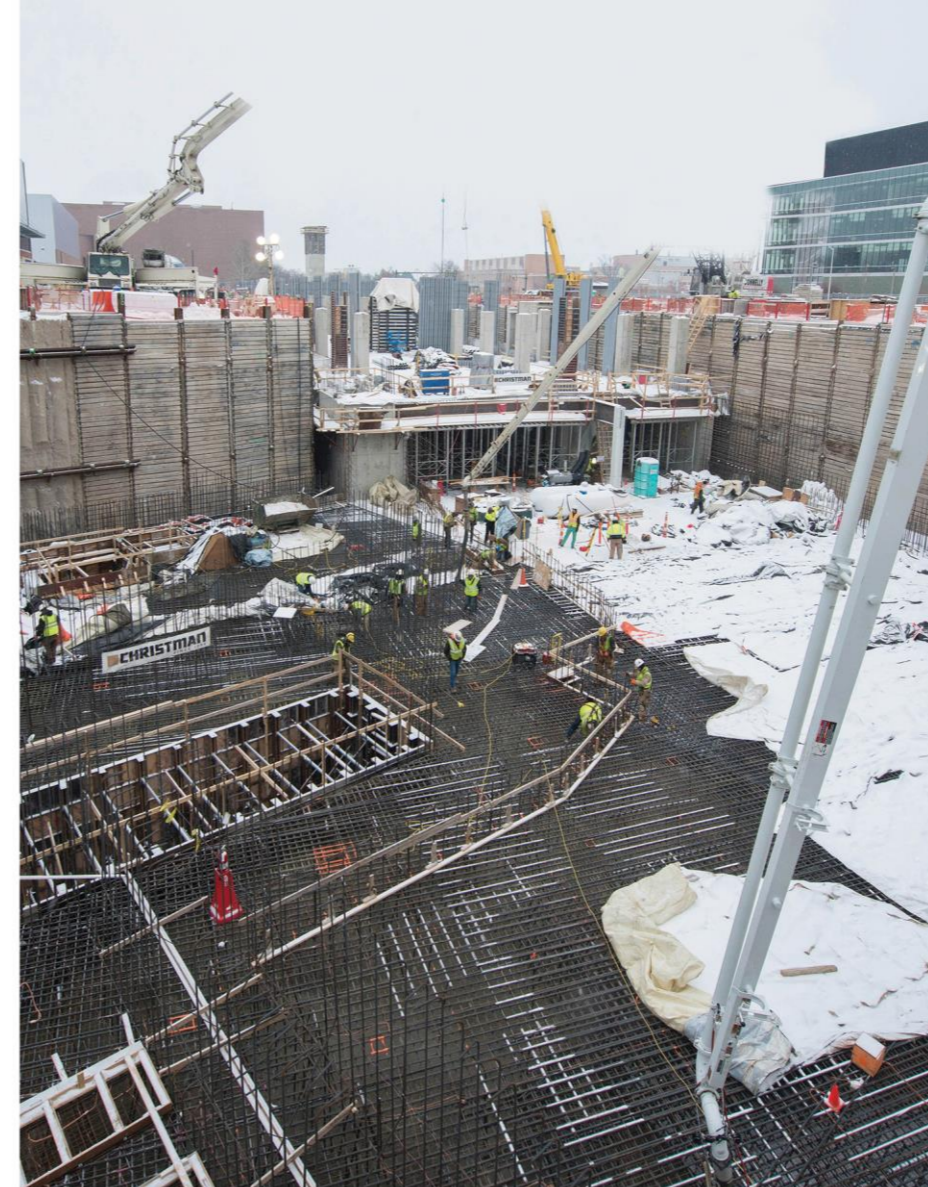
Antifreeze is a safe and economical additive used in liquid form to produce high quality cold weather concrete

1% of the weight of the cement used

### Uses

In cases of periodic cold expected - partial frost during the day and frost expected at night - when concrete cannot be poured under normal conditions

Mixing method: Mix the antifreeze with water and then add it to the materials. If the antifreeze freezes in the barrel, melt it slowly at room temperature



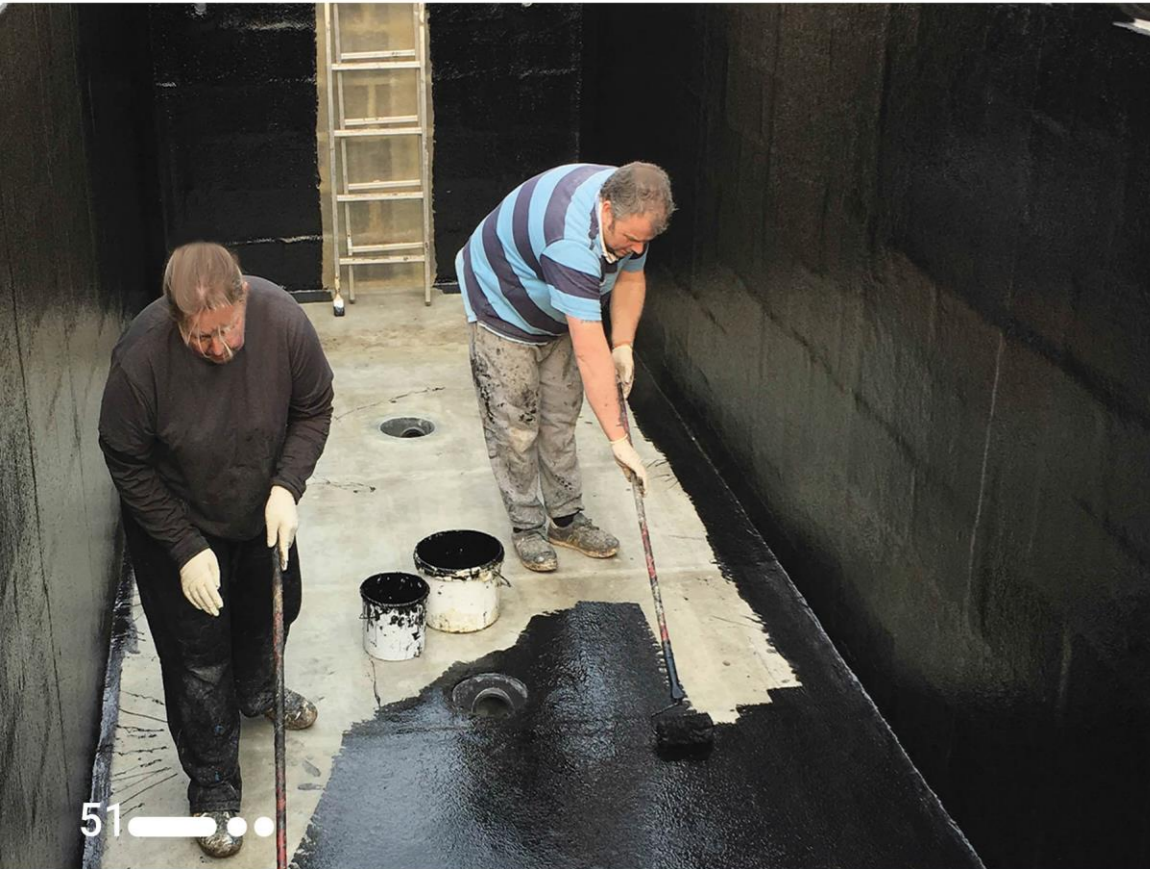
### Uses

- Increasing frost resistance
- without chloride and does not damage reinforcement
- Reducing the amount of concrete water without reducing efficiency and improving concrete strength



## Bituminous coating

A one-component liquid coating based on bituminous materials and solvents which, if properly processed, will have high adhesion to cement and metal surfaces



### Uses

- Internal surface water storage sources
- the inner surface of food silos
- concrete foundations columns
- retaining walls in contact with the soil

### Benefits

Phenol free  
Resistant to chlorinated water  
High adhesion to finished surfaces  
Ready to use, no mixing required



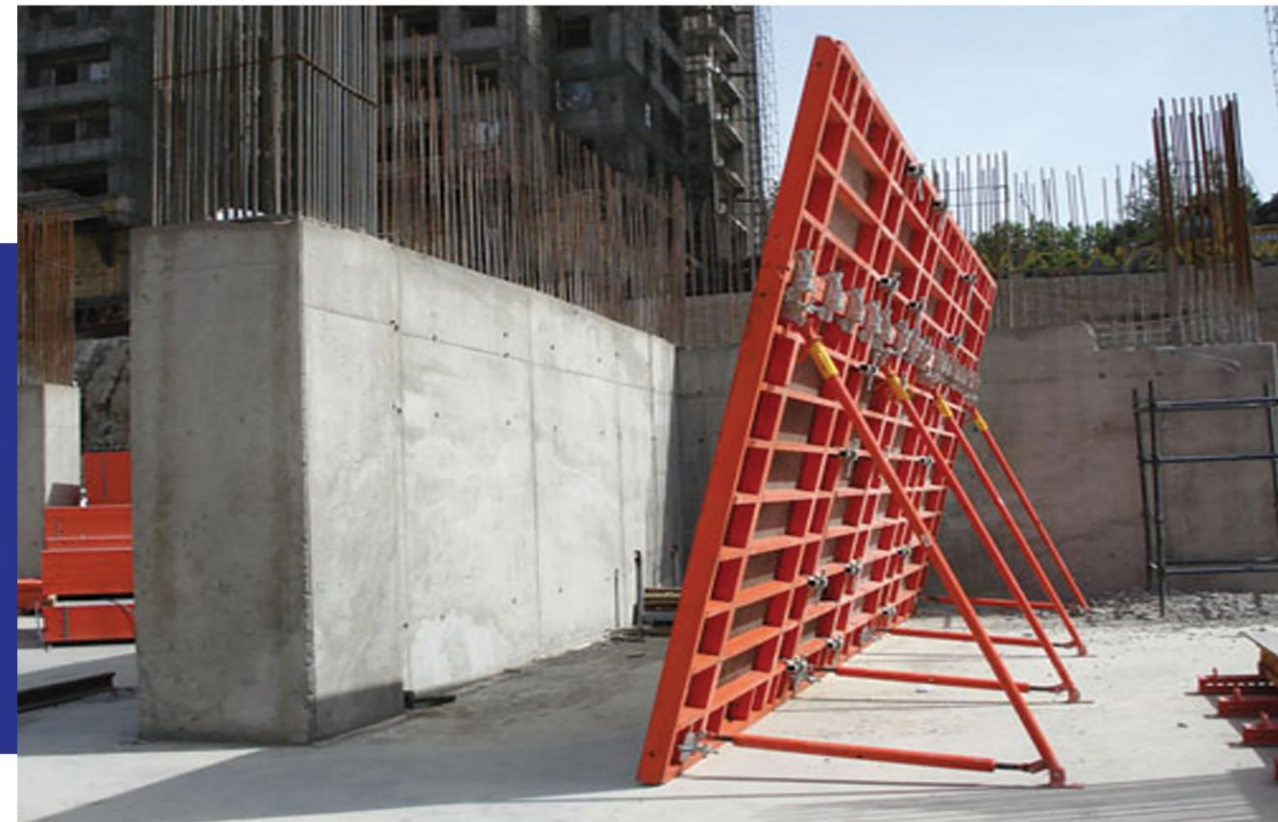
Consumption amount: Cement surfaces: 0.6 to 0.3 kg per square meter for two coats of primer

Metallic surfaces: 0.2 to 0.5 kg per square meter for two to three coats of primer



## Form oil

A blend of refined petroleum-based essential oils, emulsifiers and fatty acids that produce a thin, stable film of oil texture on the mold wall. Using these materials for metal, plastic and wood molds will make the molding process easy, fast and clean



### Benefits

Reduces concrete contamination    Increases the useful life of the molds    Optimum adhesion to the mold

### Consumption amount

Surface coverage: wooden formwork: 10 square meters per kilogram  
metal or plastic formwork: 20 square meters per kilogram

Color: Navy    Package: Gallon 20 liters



### Quick concrete

This product is widely used in concrete structures sealing operations. Instant concrete is based on cement and after being mixed with water in just 20 seconds; it hardens and prevents the passage of water. This material is widely used in structures that are subject to high hydrostatic pressure (such as dams) because it can repair leaks quickly, this property is used when other concrete sealing products fail to prevent leaks in such structures

Mixing ratio: three parts mortar and one part water



### Consumption amount

due to the problem and the special weight of the mortar in the case of the dough, it is possible to determine the exact amount required by the size of the cracks. But in general it can be said that for a square with an area of one meter and a depth of 5 mm, about 6 kg of this mortar should be used

